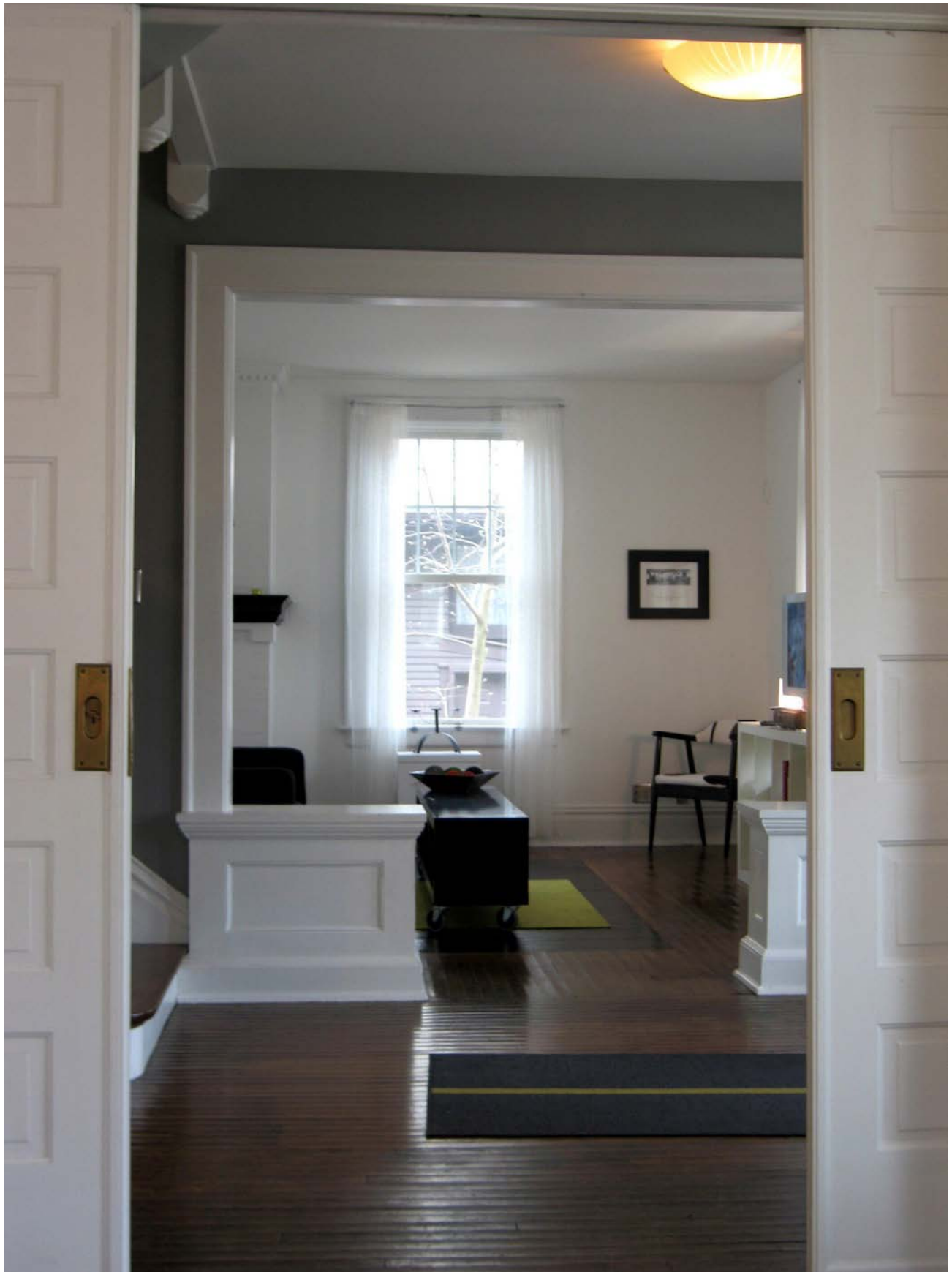


THE FOLLOWING PAGES REPRESENT A PORTION OF MY WORK AS  
INTERIOR/EXTERIOR/LANDSCAPE DESIGNER



designer artist media-creative



**SHANKLIN RESIDENCE – TRAD-MOD (2000 sf)**  
**DESIGNER**



LIVING ROOM – GLOSS BLACK HARDWOOD ISLAND



CAFÉ ROOM – CUSTOM CEILING LIGHT





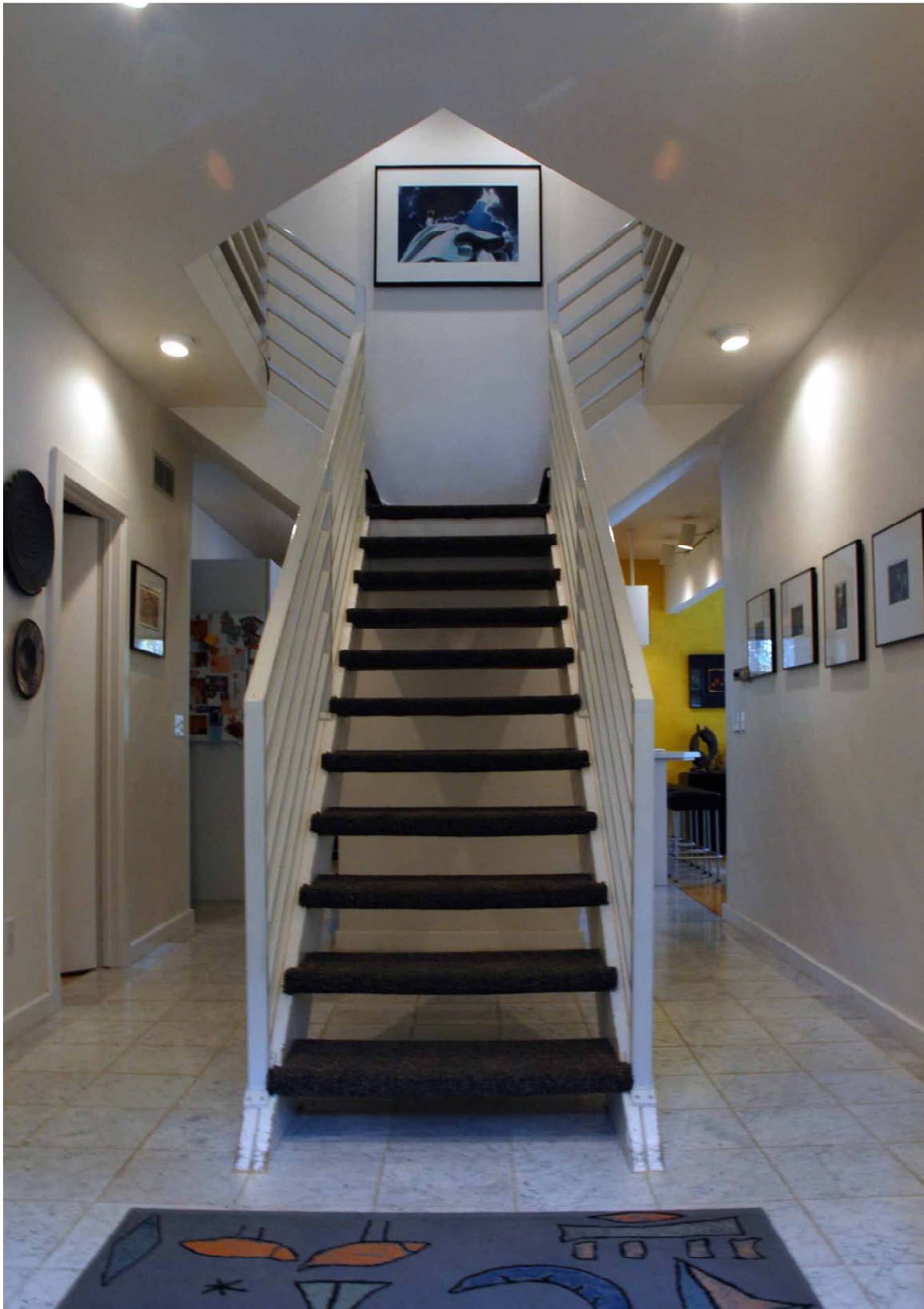
**VILLA DAKOTA RESIDENCE** – NEO-POST MODERN  
(3800 sf)

**DESIGNER & CONTRACTOR**



TWO TIER PATIO – CONCRETE CAP STEEL COLUMNS





CARRERA MARBLE - FLOATING STAIRCASE

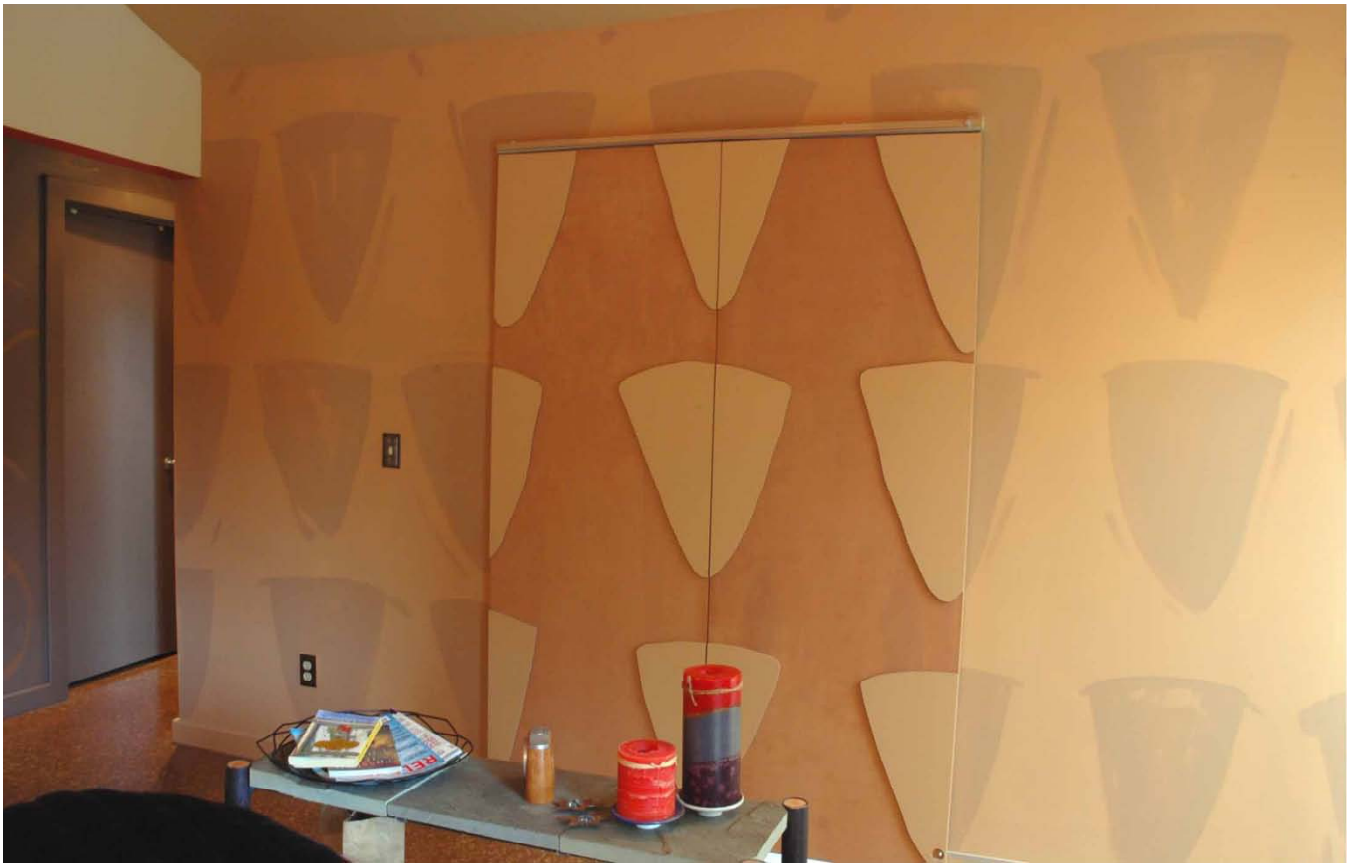


BIRCH PLYWOOD FLOOR – EXPOSED RAFTERS



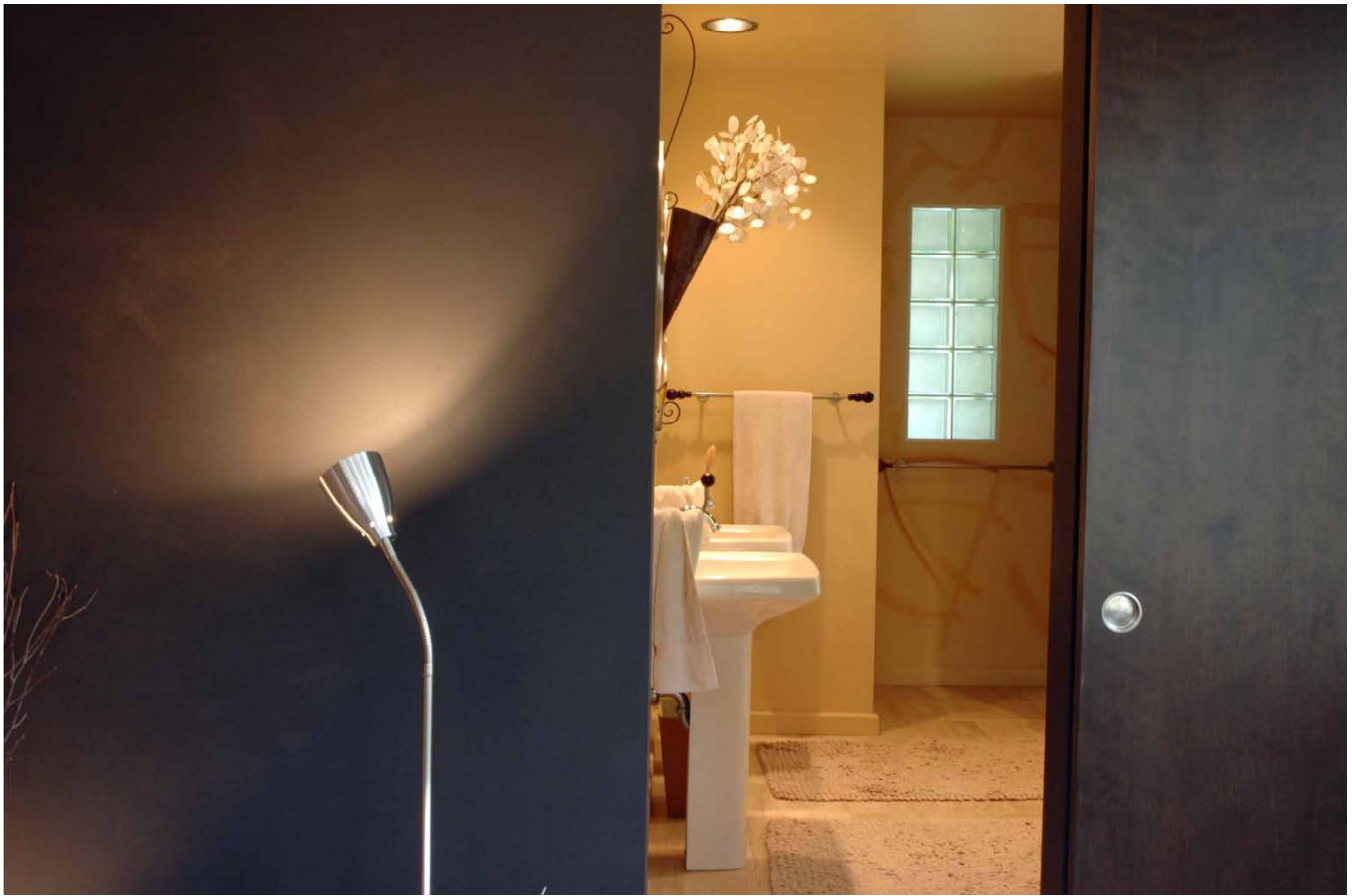


CENTRAL FOYER/GALLERY – STEEL RAILING



STAINED BIRCH DOORS w/ RAISED & PAINTED PATTERN





ESPRESSO SLIDING WALL – TRAVERTINE MARBLE FLOOR



WOOD FINIAL  
TOWEL RACKS



NATURAL SLATE & CORK  
FIREPLACE HEARTH



HAND-SHAPED  
AGED NICKEL TRIM





**STAHL HOUSE – MID-CENTURY MOD (3100 sf)**

**DESIGNER & PROJECT MANAGER**



MILKGLASS  
PORCHLIGHT



STEEL BANDED TERRACE  
SLATE CHIP FILL



STEEL BANDED  
SLATE PERIMETER

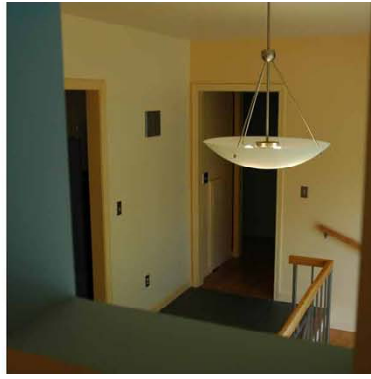


SLATE FOYER – SKY WALL CUT-OUTS

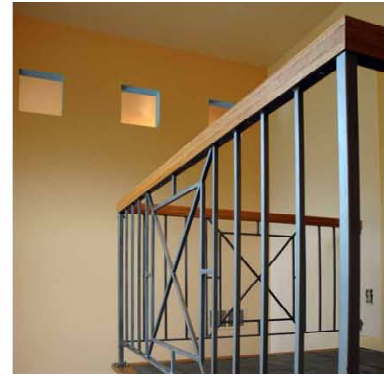




CLEAR COAT OAK  
OILED SLATE



WINDOW WALL VIEW  
TO FOYER



RE-SHAPED ORIGINAL  
POWDERCOAT RAILING

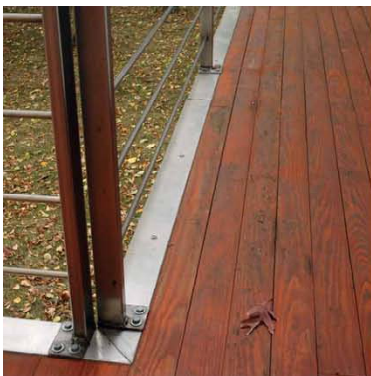


OPAQUE STAIN FLOOR

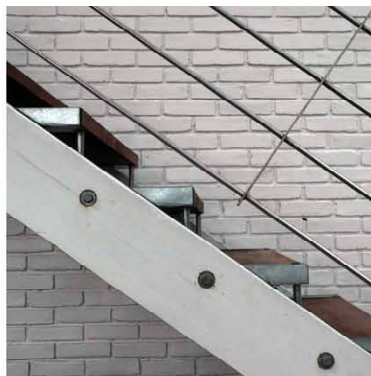




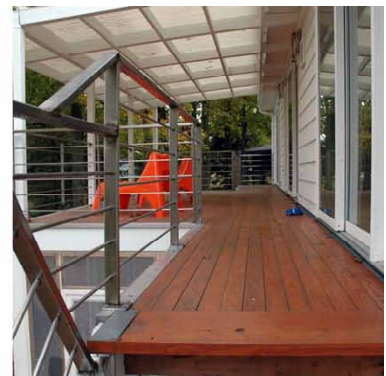
YELLOW PINE DECK – CUSTOM STAINLESS RAILING



POST & ROD RAILING  
PERIMETER FLASHING



SUSPENDED TREAD  
STAIRCASE



STAINED YELLOW PINE  
TONGUE & GROOVE



**SALON ST. THOMAS – WARM INDUSTRIAL (1150 sf)**

**DESIGNER**



**BIRCH TAPERED  
COLUMNS**

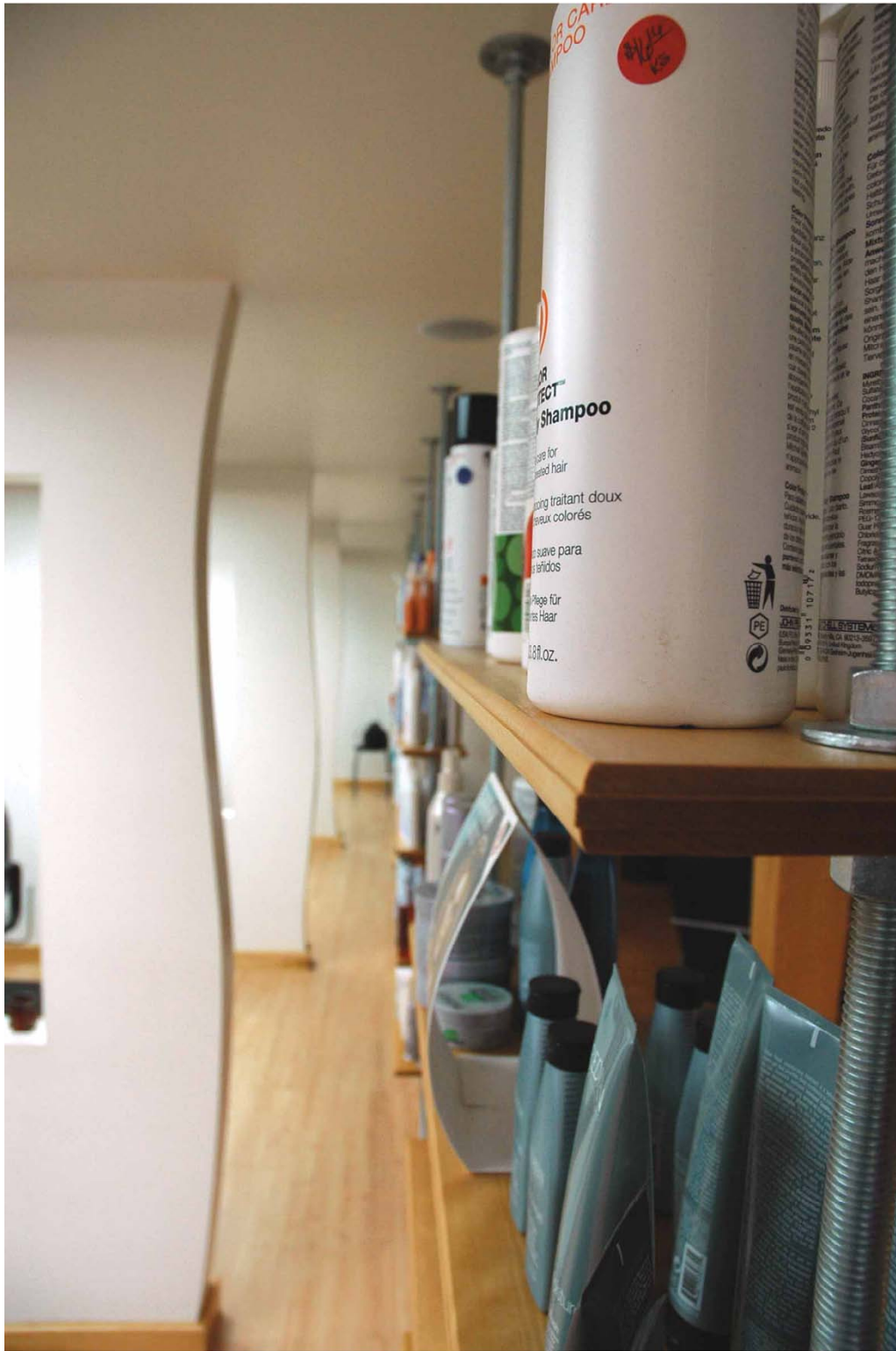


**WINDOW WALLS**



**ALL-THREAD  
ROD SHELVING**





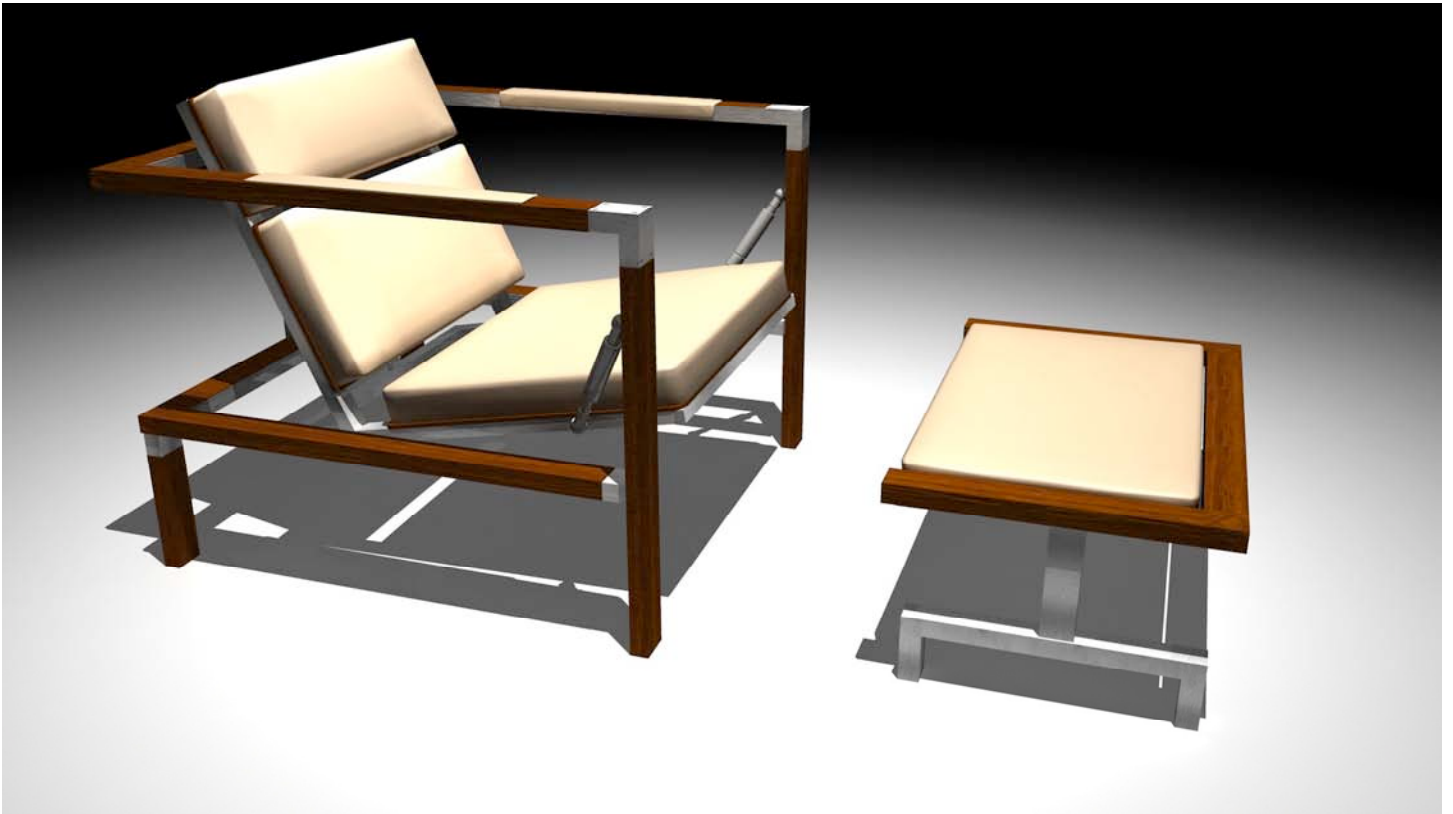
WAVE WALLS – ALL-THREAD SHELVES



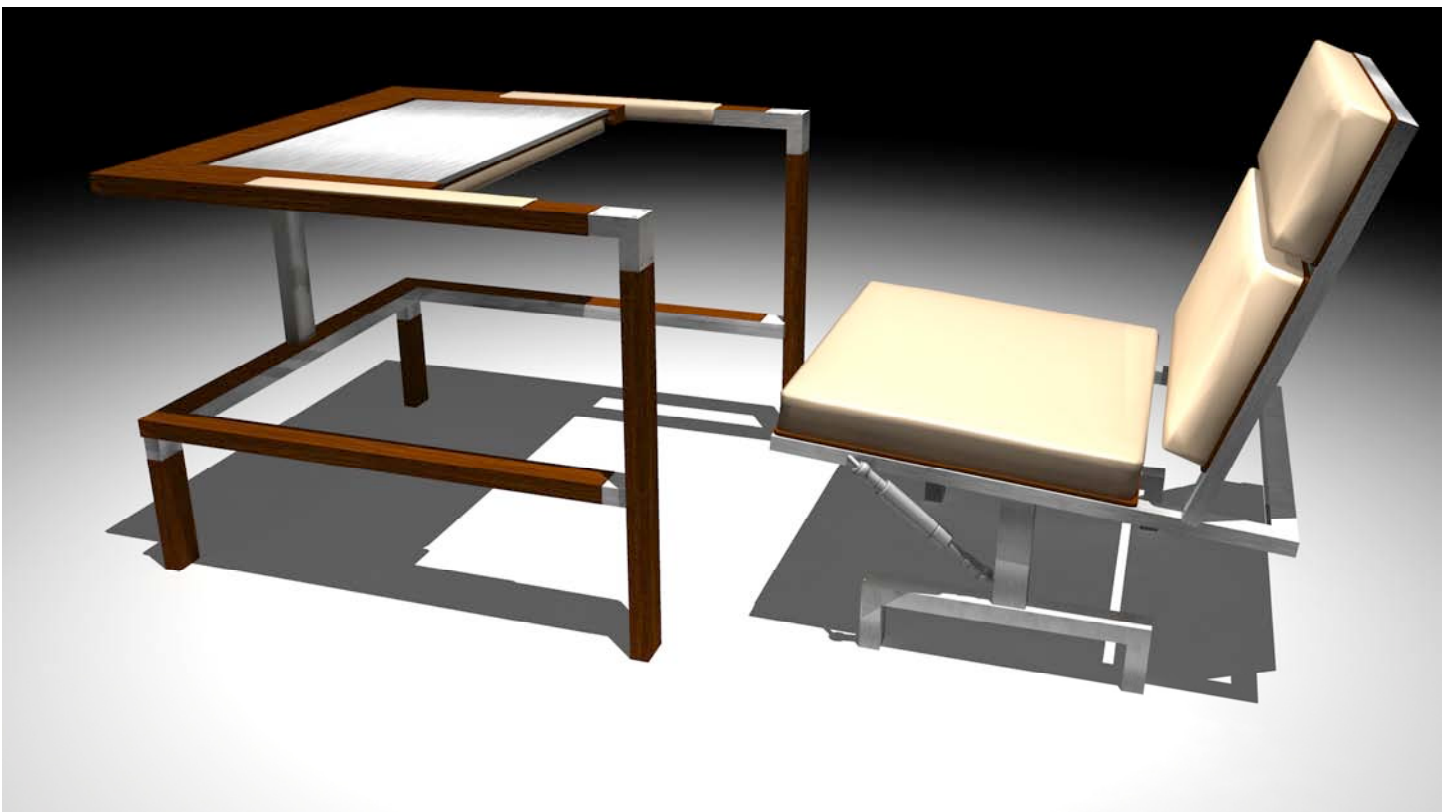


**DOWNTOWN APARTMENT PROJECTS (ONE OF THREE)**

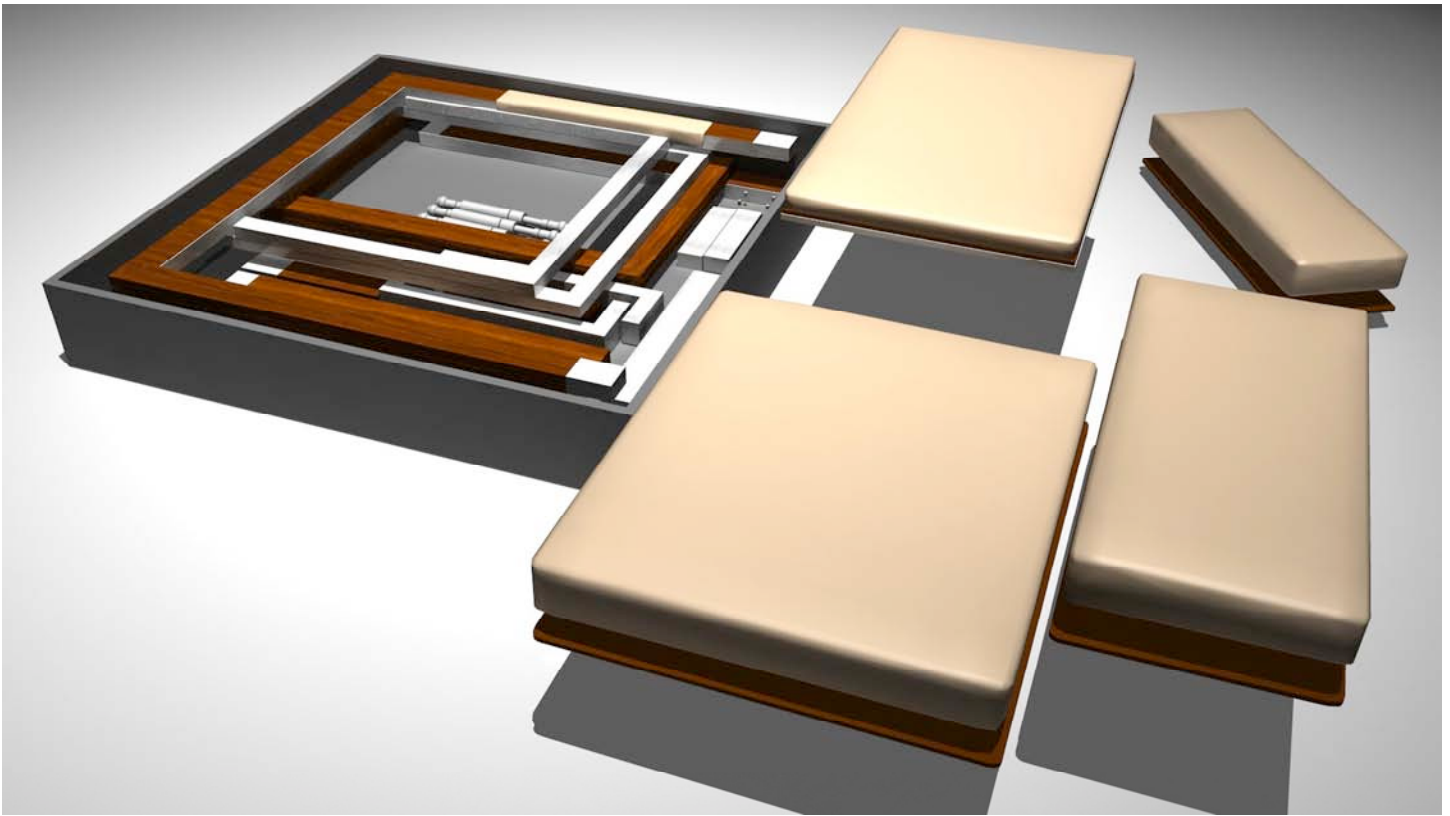
**DESIGNER & PROJECT MANAGER**



**FRANK SUSPENDED LOUNGE CHAIR & OTTOMAN**  
**DESIGNER** (COLLABORATION W/ DOUG HARTMAN)



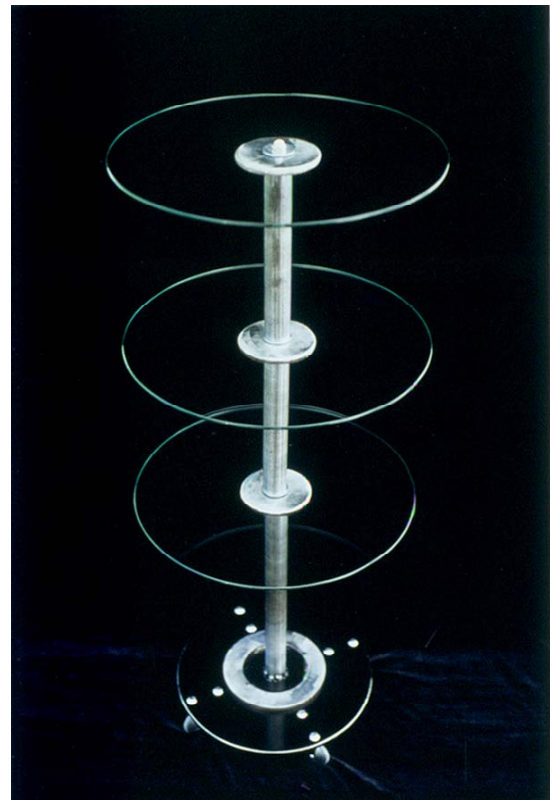
FRANK DESK TO CHAIR CONVERSION



FRANK FLAT-PACK BREAKDOWN



"SLIVER" STEEL SIDE TABLE



"TRACE" THREE TIER PEDESTAL



THE FOLLOWING PAGES REPRESENT A PORTION OF MY WORK AS  
**VP MARKETING/DIRECTOR OF CREATIVE MEDIA**  
FOR BLIZZARD SKI AMERICA

RESPONIBILITIES INCLUDED **ALL MEDIA CONCEPT & DIRECTION, PRODUCT & TRADE SHOW  
DESIGN AND SPONSORED ATHLETE PROGRAMS FOR THE USA & CANADA**

**SLIDE THE PLANET**

CAUSE ITS A BLIZZARD OUT THERE

[www.blizzardski.com](http://www.blizzardski.com)

**BLIZZARD**  
SKI  
AMERICA

828.898.4668

**WARNING!**  
THEY'RE NOT FOR EVERYONE,  
BUT THEN AGAIN THE BEST NEVER IS.

BLIZZARD SKI AMERICA  
P.O. BOX 436 BANNER ELK, NC 28604

WE HAVE 2 WORDS FOR ANY  
DEALER WHO ISN'T PUMPED  
ABOUT OUR FREE SUV  
PARTNERSHIP  
PROGRAM.



## BUNNY SLOPE.

DRIVE THE PLANET SUV GIVEAWAY

YOU KNOW OUR NAME, YOU KNOW  
OUR PRODUCTS ARE THE ULTIMATE  
IN SKIING TECHNOLOGY AND YOU  
KNOW OUR SKIS AREN'T FOR WIMPS.

HERE'S A GREAT REASON TO CARRY  
BLIZZARD SKIS. IT'S CALLED THE  
BLIZZARD PARTNERSHIP PROGRAM.  
WE WANT TO WORK TOGETHER  
WITH OUR DEALERS TO BECOME A  
WINNING COMBINATION. WITH  
INCENTIVES LIKE BUYING BACK YOUR  
UNSOLD INVENTORY (ALL BRANDS  
OF HARD AND SOFT GOODS),  
STRONG MARKETING AND MEDIA  
PROGRAMS, GREAT SERVICE, SUPPORT  
AND SELL-THROUGH, BLIZZARD IS  
THE BEST PRODUCT LINE CHOICE.

AND IF THAT ISN'T ENOUGH, WE'RE  
ALSO GIVING OUR DEALERS A  
FREE SUV TO DRIVE FOR TWO  
YEARS.\* IT'S ALL PART OF THE  
PARTNERSHIP PROGRAM THAT'S  
WORKING FOR YOU. GO AHEAD  
AND TAKE US FOR A TEST DRIVE.



**SUNDAY ONLY: PAUL HOULE,  
PRESIDENT OF REMINGTON  
INVESTMENT INC., WILL BE  
ON HAND TO GIVE YOU THE  
DETAILS OF OUR EXCITING  
PARTNERSHIP PROGRAM.**



P.O. BOX 436 BANNER ELK, NC 28604

**SIA VEGAS SHOW 2000-BOOTH #4882**  
PHONE: 828.898.4668

\*DEALERS MUST MEET LIMITED PURCHASE REQUIREMENTS TO QUALIFY  
(VEHICLE SHOWN IS A REPRESENTATIVE SUV ONLY.)



REMEMBER HOW MOM SAID YOUR  
SKIING WOULD DRIVE HER  
TO DRINK?



TELL HER TO HOP IN.

**DRIVE THE PLANET SUV GIVEAWAY**

YOU KNOW OUR NAME, YOU KNOW OUR  
PRODUCTS ARE THE ULTIMATE IN SKIING  
TECHNOLOGY AND YOU KNOW OUR SKIS  
ARE TOUGH ENOUGH TO HANDLE THE  
WORST BATTLES, EVEN THE ONES FROM  
MOM.

HERE'S A GREAT REASON TO CARRY  
BLIZZARD SKIS. IT'S CALLED THE BLIZZARD  
PARTNERSHIP PROGRAM. WE WANT TO  
WORK WITH OUR DEALERS TO BECOME A  
WINNING COMBINATION. WITH  
INCENTIVES LIKE BUYING BACK YOUR  
WHOLE INVENTORY (ALL BRANDS OF  
HARD AND SOFT GOODS), STRONG  
MARKETING AND MEDIA PROGRAMS, GREAT  
SERVICE, SUPPORT AND SELL-THROUGH,  
BLIZZARD IS THE BEST PRODUCT LINE  
CHOICE IN THE BUSINESS.

AND IF THAT'S NOT ENOUGH, WE'RE  
ALSO GIVING OUR DEALERS A FREE  
SUV TO DRIVE FOR TWO YEARS\* ALL  
ON US. IT'S ALL PART OF THE PARTNERSHIP  
PROGRAM THAT'S WORKING FOR YOU. GO  
AHEAD AND TAKE US FOR A TEST DRIVE.  
WOULDN'T MOM BE PROUD?



P.O. BOX 436 BANNER ELK, NC 28604

**SIA VEGAS SHOW 2000-BOOTH #4882**  
FONE: 828.898.4668

\*DEALERS MUST MEET LIMITED PURCHASE REQUIREMENTS TO QUALIFY.  
(VEHICLE SHOWN IS A REPRESENTATIVE SUV ONLY.)



YES. IT'S A PARTNERSHIP.  
YES. YOU GET A FREE SUV.



NO. YOU STILL CAN'T EAT YELLOW SNOW.

DRIVE THE PLANET SUV GIVEAWAY



YOU KNOW OUR NAME, YOU KNOW  
OUR PRODUCTS ARE THE ULTIMATE IN  
SKIING TECHNOLOGY AND YOU KNOW  
OUR SKIS ARE TOUGH ENOUGH TO MEET  
ANY CHALLENGE THAT MOTHER NATURE  
(OR A DOG) PUTS IN YOUR PATH.

HERE'S ONE MORE REASON TO CARRY  
BLIZZARD SKIS: IT'S CALLED THE BLIZZARD  
PARTNERSHIP PROGRAM. WE'RE  
WORKING TOGETHER WITH OUR  
DEALERS TO BECOME A WINNING  
COMBINATION WITH INCENTIVES LIKE  
BUYING BACK YOUR UNSOLD  
INVENTORY (ALL BRANDS OF HARD AND  
SOFT GOODS), STRONG MARKETING AND  
MEDIA PROGRAMS, GREAT SERVICE,  
SUPPORT AND SELL-THROUGH. BLIZZARD  
IS THE BEST PRODUCT LINE CHOICE.

AND IF THAT'S NOT ENOUGH, WE'RE  
ALSO GIVING OUR DEALERS A FREE  
SUV TO DRIVE FOR TWO YEARS ALL  
ON US.\* IT'S PART OF THE PARTNERSHIP  
PROGRAM THAT'S WORKING FOR YOU.  
GO AHEAD AND TAKE US FOR A TEST  
DRIVE.

WWW.BLIZZARDSKI.COM



P.O. BOX 436 BANNER ELK, NC 28604

SIA VEGAS SHOW 2000-BOOTH #4882  
PHONE: 828.898.4668

\*DEALERS MUST MEET LIMITED PURCHASE REQUIREMENTS TO QUALIFY  
(VEHICLE SHOWN IS A REPRESENTATIVE SUV ONLY.)



Purveyors of hype,  
followers of the  
crowd, keep  
up with the  
Jones'  
types,

Move on.



**They're not for everyone...  
but then again the best never is.**

IN 1999 BLIZZARD  
SKIS WON SIX  
MEDALS AT THE  
VAIL WORLD  
CHAMPIONSHIPS  
WITH SOME  
INCREDIBLE NEW  
TECHNOLOGY  
CALLED SIGMA.  
NOW THAT SAME  
TECHNOLOGY  
IS AVAILABLE TO  
YOU IN THE ALL  
NEW WINTER OF  
'99 - 2000 LINE OF  
BLIZZARD SKIS.  
DON'T MISS THE  
BEST SKIING SKIS  
ON THE PLANET.

Blizzard Ski America • P.O. Box 436 • Banner Elk, NC • 28604 • 828-898-4608 • [www.blizzardski.com](http://www.blizzardski.com)



# SLIDE THE PLANET



- **Sigma X-Race Carve 24**  
The Breakthrough Technology  
Six Medals Ski
- **Sigma X-Mountain Carve 22**  
The Ultimate Everything Ski
- **YAHOO**  
The Raging Park & Pipe Ski

Cause it's a **BLIZZARD** out there.



They're not for everyone, but then again the best never is.

Blizzard Ski America • P.O. Box 436 • Banner Elk, NC • 28604 • 828-898-4668 • [www.blizzardski.com](http://www.blizzardski.com)

# SLIDE THE PLANET

Cause it's a  **BLIZZARD** out there.





Design A



Bottom

## Woody Lindenmyer Signature Big Mountain Freeride Ski

ski body: metallic  
silver [high gloss]



Lg Woody signature (matte),  
Blizzard (in oval) and metallic  
lettering is gloss black



Woody signature  
in oval, dark red



oval shapes [windows]:  
show through vertical-  
laminate wood core



- ski body: flat black (no gloss)
- large SCSI lettering is gloss dark grey (80% black)
- small SCSI, Blizzard, logos, ski length numerals: metallic silver
- oval shapes (windows): same as carbon fiber look on Kompressor ski

**SCSI Twin-Tip model  
terrain park / freeride ski**



Top



Bottom